



INDOFINE Chemical Company, Inc.

121 Stryker Lane, Bldg. 30, Suite 1 • Hillsborough, NJ 08844 • U.S.A.

Phone: (908) 359-6778 • FAX: (908) 359-1179

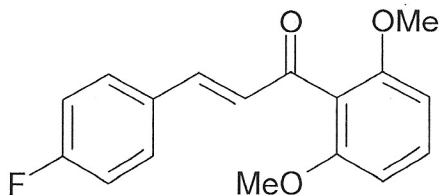
website: www.indofinechemical.com

e-mail: chemical@indofinechemical.com

CERTIFICATE OF ANALYSIS

Cat. No.: 19-669

<u>Product:</u>	2',6'-DIMETHOXY-4-FLUOROCHALCONE
<u>Lot No.:</u>	0312206
<u>Molecular Formula:</u>	C ₁₇ H ₁₅ FO ₃
<u>Molecular Weight:</u>	286.31
<u>Melting Point:</u>	101-103°C
<u>Appearance:</u>	Off white powder
<u>TLC:</u>	Hexane:Ethyl acetate (7:3)
<u>Solubility:</u>	Soluble in Chloroform
<u>NMR Spectrum:</u>	Enclosed
<u>Purity(HPLC):</u>	99.59%





INDOFINE Chemical Company, Inc.

121 Stryker Lane, Bldg. 30, Suite 1 • Hillsborough, NJ 08844 • U.S.A.

Phone: (908) 359-6778 • FAX: (908) 359-1179

website: www.indofinechemical.com

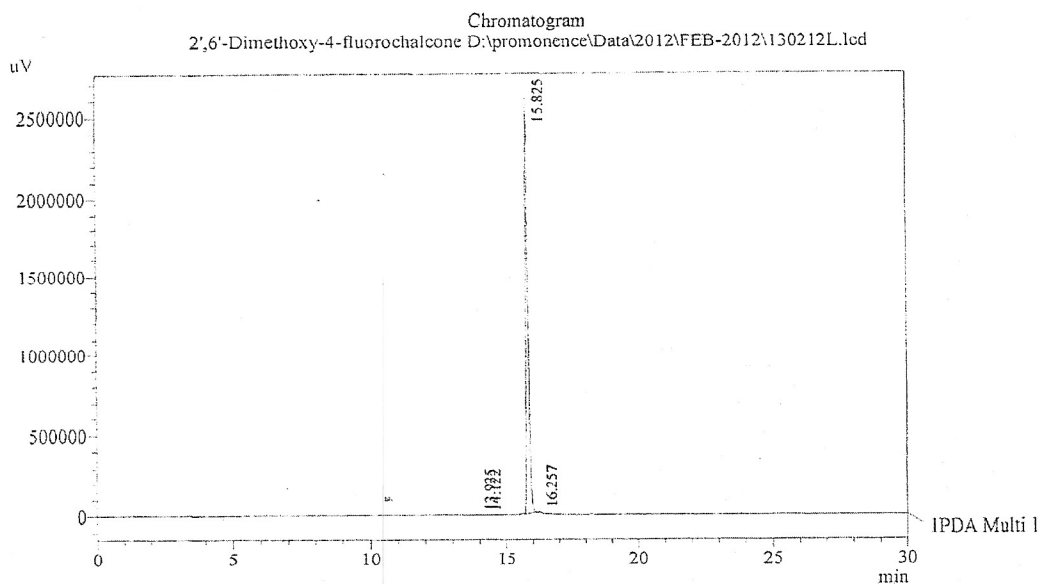
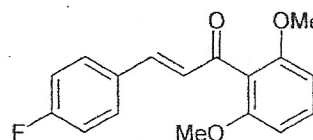
e-mail: chemical@indofinechemical.com

HPLC ANALYSIS

Acquired by : Sanjeev
Sample Name : 2',6'-Dimethoxy-4-fluoroalcone
Sample ID : Lot No:-0312206
Injection Volume : 20 uL
Data Filename : 130212L.lcd
Method Filename : Linear Gradient.M.lcm

Catalog no.: 19-669
Product name: 2',6'-Dimethoxy-4-fluoroalcone
Lot No.: 0312206

Column : LUNA C-18(2), (250mm x4.6mm 5.0µ)
Flow : 1.000 mL/min.
Mobile Phase : A(0.05% TFA in water) B(Acetonitrile)
0.01 90 10
12.0 10 90
20.0 10 90
25.0 90 10
30.0 90 10



1 IPDA Multi 1 / 260nm 4nm

PeakTable

Peak#	Name	Ret. Time	Area	Area %	Relative Retention Time
1	RT:13.921	13.925	7921	0.05	0.88
2	RT:14.129	14.122	10691	0.07	0.89
3	RT:15.850	15.825	15580250	99.59	1.00
4	RT:16.260	16.257	44907	0.29	1.03
Total			15643769	100.00	



INDOFINE Chemical Company, Inc.

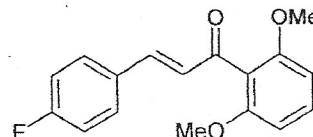
121 Stryker Lane, Bldg. 30, Suite 1 • Hillsborough, NJ 08844 • U.S.A.

Phone: (908) 359-6778 • FAX: (908) 359-1179

website: www.indofinechemical.com

e-mail: chemical@indofinechemical.com

Catalog no.: 19-669
Product name: 2',6'-Dimethoxy-4-fluorochalcone
Lot No.: 0312206

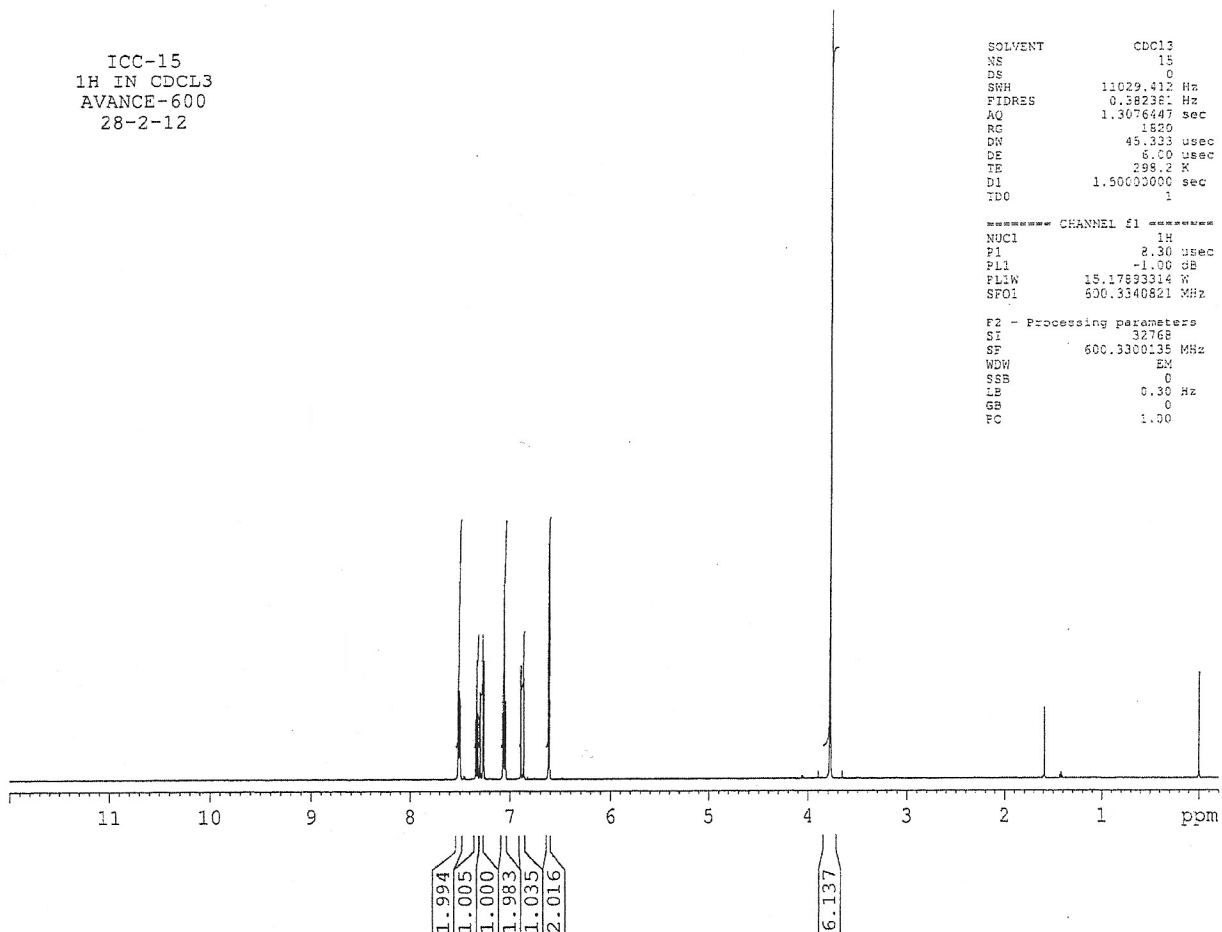


ICC-15
1H IN CDCL3
AVANCE-600
28-2-12

SOLVENT CDCL3
NS 15
DS 0
SFR 11029.412 Hz
FIDRES 0.582361 Hz
AQ 1.3076447 sec
RG 1620
DN 45.333 usec
DE 6.00 usec
TE 298.2 K
D1 1.5000000 sec
TD0 1

***** CHANNEL f1 *****
NUC1 1H
P1 2.30 usec
PL1 -1.00 GB
PLW 15.1783314 W
SFO1 600.3340821 MHz

F2 - Processing parameters
SI 32768
SF 600.3300135 MHz
WDW EM
SSB 0
LE 0.30 Hz
GB 0
FC 1.00





INDOFINE Chemical Company, Inc.

121 Stryker Lane, Bldg. 30, Suite 1 • Hillsborough, NJ 08844 • U.S.A.

Phone: (908) 359-6778 • FAX: (908) 359-1179

website: www.indofinechemical.com

e-mail: chemical@indofinechemical.com

Catalog no.: 19-669
Product name: 2',6'-Dimethoxy-4-fluorochalcone
Lot No.: 0312206

